

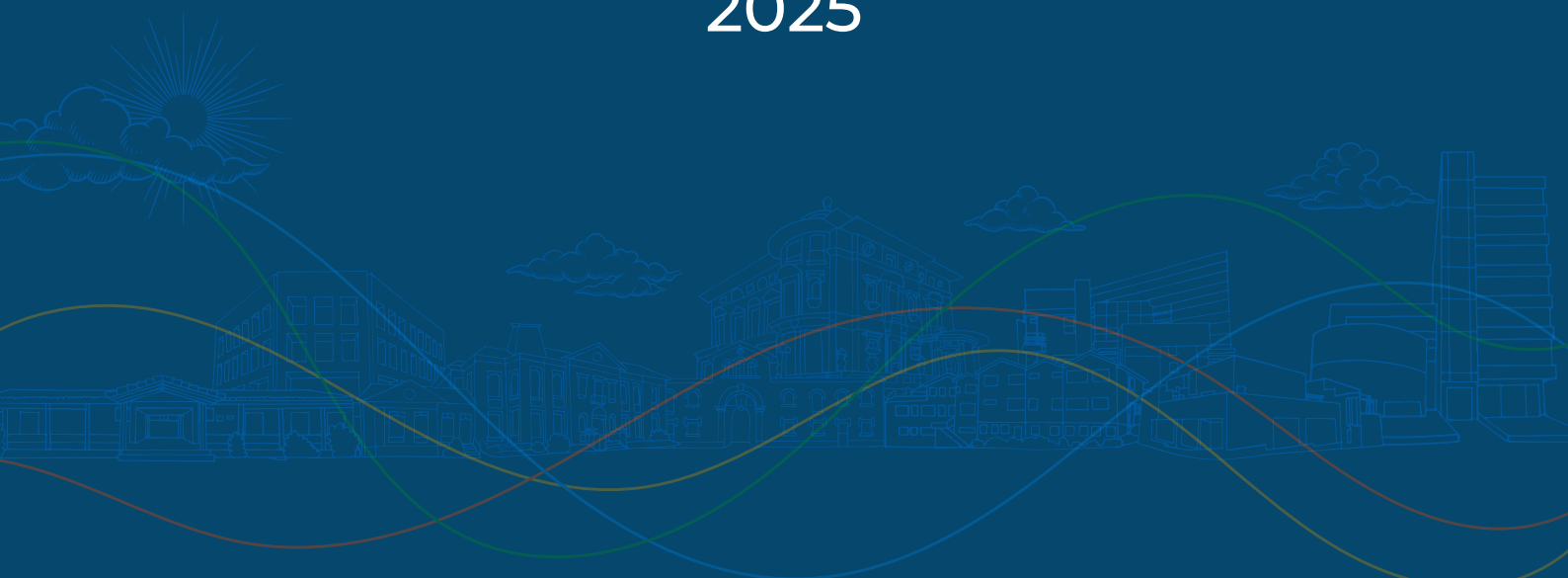
Health | Education | Culture | Agroecology | Scholarships



FUNDACIÓN  
**PATIÑO**

**ANNUAL  
REPORT**

2025



[www.patino.org](http://www.patino.org)

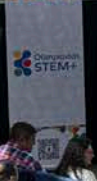
 fundacionpatino

 @fundacionpatino

 Fundación Simón I. Patiño



ORGANIZADO POR:



FUNDACIÓN PATINO

STEM+

STEM+

STEM+

UPB

# Contents

1

Editorial

4

Agroecology

12

Culture

12

Education

15

Paediatric health

18

Activities  
in Switzerland





# Editorial

## Acting with purpose to achieve lasting change

Simón I. Patiño created the Simón I. Patiño University Foundation (FUSIP) in 1931 out of a simple yet ambitious belief: the country's development depended on the Bolivian people's moral, intellectual and professional foundation. His heirs built on this belief by establishing the Simón I. Patiño Foundation (FSIP) in Geneva in 1958, which was tasked with managing the organisation's resources and implementing programmes in Bolivia in the areas of education, culture, healthcare and agriculture. Nearly a century after Patiño laid out his vision, we are continuing to operate through this dual architecture, guided by that same commitment.

2025 was a bicentennial year for Bolivia – an ideal opportunity for us to take stock of the past and look to the future. More than just a celebration, this event served as a lens through which to examine whether the country will be able to build on its efforts in the area of sustainable development given the tightly interwoven challenges we're facing in healthcare, education, the environment and the economy.

It is this framework that guides the Foundation's work. Going beyond our various sector-specific roles, we are active in building sustainable solutions that enhance the skills of the people, institutions and regions of Bolivia. We address our core themes of health, education, culture and agroecology not in isolation but rather as part of an overarching objective: to support all facets of human progress. This approach is fully consistent with the founding objectives of both FUSIP and FSIP.

The activities described in this report reflect this holistic approach. They illustrate our ability to act on different levels and respond to people's immediate and to build models designed for the reality on the

ground – models that can be shared, adapted and replicated. Concrete action aimed at fostering a sustainable transition is the cornerstone of what we do.

In 2025, we enhanced these efforts by consolidating our strategic framework. All our decisions are now guided by the need for rigorous impact assessments; by transparency and accountability mechanisms; by our drive to act as an exemplary organisation; and by our steadfast loyalty to our founder's aims. These principles are not just a statement of intent: they structure the way in which we act, govern and evaluate our actions. By the same token, the principle of local empowerment has taken on greater importance.

With decision-making increasingly informed by the situation on the ground, we can design better-targeted initiatives and encourage the emergence of sustainable local dynamics. We want to make an impact not only by mobilising resources but also by equipping local stakeholders to take ownership of and continue the work we initiate. In 2025, we once again demonstrated that our approach is based on building models – whether for healthcare, education, cultural outreach or sustainable farming – that are designed to be evaluated, shared and replicated beyond the scope of our own work. Our goal is to show that quality and efficiency are compatible with a long-term impact.

This ambition takes on special meaning as Bolivia celebrates two centuries of independence. In addition to perpetuating a long tradition, we are embracing our current responsibility to support Bolivia's development through a rigorous, consistent and determined approach.



## LA PAZ DEPARTMENT

Espacio Patiño,  
La Paz



Albina R. de Patiño Child  
Nutrition Centre, El Alto



Cochuna project,  
Coroico



## COCHABAMBA DEPARTMENT

Espacio Patiño,  
Cochabamba



Palacio Portales



Villa Albina

Hacienda  
Pairumani



Albina R. de Patiño  
Paediatric Centre



## POTOSÍ DEPARTEMENT

Encuentros project



## SANTA CRUZ DEPARTMENT

Espacio Patiño,  
Santa Cruz



Hacienda Patiño



**GENEVA**  
Foundation  
head office



The Simón I. Patiño Foundation operates through regional hubs that coordinate our activities in the areas of health, education, culture and agroecology.

Most of our work is done in **Cochabamba**, where our main facilities are located: the Albina R. de Patiño Paediatric Centre, the Palacio Portales and Villa Albina cultural centres, and Hacienda Pairumani, which serves as a model farm for agroecology. This regional hub also runs educational activities, primarily through Espacio Patiño, as well as six community libraries that offer educational opportunities locally across the area.

In **La Paz**, we operate through Espacio Patiño and the Doña Albina theatre, which carry out educational and cultural activities. The Albina R. de Patiño Child Nutrition Centre in **El Alto** runs prevention and support programmes for local families. We are also present in the Coroico region where we support educational initiatives.

In **Santa Cruz**, our Espacio Patiño is a reference point for educational and cultural activities, and our Hacienda Patiño model farm plays a pivotal role in the development and spread of agroecology methods across the region.

In **Potosí**, we run educational and health initiatives for highly vulnerable populations.

This regional footprint enables us to pair our main facilities with locally oriented programmes and adapt our initiatives to real-world conditions and communities' specific needs.

From our head office in **Switzerland**, we provide international scholarships so that Bolivian students can attend universities in Europe and Latin America. For instance, with our university residence halls in Geneva, we help motivated students receive an education in Switzerland and return to their country, where they can contribute to its development. We also implement and support a range of cultural activities in Geneva and Paris.

# Agroecology

## HACIENDA PATIÑO (SANTA CRUZ)

### Produce, regenerate, transfer: a model farm with a countrywide impact

In Santa Cruz, which is the heart of Bolivia's agricultural region, the goal isn't only to increase output but also to transform the very means of production. This department is home to most of the country's bovine, dairy and crop production, meaning that any technical advances or environmental imbalances have ramifications well beyond the local community. This is where Hacienda Patiño clearly positioned itself in 2025 as proof that it is possible to increase production while regenerating the soil, building up local skills and sharing replicable practices.

The Hacienda Patiño model farm has two complementary goals: transforming production systems, and sharing and disseminating new methods at scale.

The first strategic goal involves the very tangible work of modernising livestock farming practices. In 2025, we trained over **300 farmers and technicians** on rotational grazing methods (rotating livestock through different sections of a pasture), ensilage (the process of storing fodder), bio-inputs (naturally derived agricultural products), electric fencing and the processing of dairy foods. One key strength of the model farm is that its practices are scalable: those tested at the pilot level have been implemented at farms spanning over 100 hectares, and in some cases up to 2,000 hectares. Hacienda Patiño therefore serves as more than a testing ground – it **accelerates the spread of new technologies**, making it a strategic driver of the transformation of Bolivia's productive sector.

Thanks to the work carried out at the model farm, we've been able to rapidly disseminate sustainable practices beyond the walls of our Foundation.

These efforts led to a sharp increase in the farm's raw milk production, which rose 45% in 2025 to exceed **54,000 litres**. A growing percentage of this milk is processed on site to create pasteurised milk, yoghurt and cheese and then sold under the Hacienda Patiño brand, primarily through local distribution channels. Following steps taken to shore up the farm's processing and marketing capabilities, it now has a stronger presence in the local market. All this demonstrates that the consumer market has room for a production model focused on quality, innovation and sustainability.

Hacienda Patiño additionally operates as a platform for action-oriented research. Its experts have conducted experiments using biochar, anaerobic digestors, probiotics, irrigation and genetically improved livestock. What's more, the farm has entered into alliances with universities, research centres and specialist organisations in order to expand its capacity to test, adapt and disseminate solutions tailored to the specific conditions in Bolivia.

In livestock farming, Hacienda Patiño has adopted meat production methods based on regenerative techniques including rotational grazing and sustainable soil management. It takes an active part in the Bolivian National Roundtable for Sustainable Beef, reflecting its growing reputation in this area.





## TRAINING



475

people trained on planting vegetable gardens and using biopreparations



1,017

students and farmers taken on educational tours of the model farm

The second strategic goal relates to educating the community about the environment and involves sharing sustainable production methods through training and public outreach. In 2025, over **4,700 people** took educational tours of the Hacienda, while more than **6,400 students** participated in our Paseo de la *Producción Sostenible* (an educational trail on sustainable production), where they learned about food production, biodiversity, soil and regenerative livestock farming through a series of immersive activities. In short, Hacienda Patiño is also an open-air classroom where students gain a hands-on understanding of the food system.

Through our Bolivia Ecológica initiative, for example, we're able to extend the Hacienda's reach well beyond the site itself. This initiative has evolved from printed materials to a dynamic digital ecosystem enabling open and

continuous access to up-to-date content. The system is designed to encourage learning, close ties with the region and knowledge sharing. More than simply providing information, the system promotes environmental education, expands our Foundation's reach and turns the knowledge we gain into concrete action to support the local area.

In 2025, Hacienda Patiño anchored its role as a unique model farm that goes beyond agricultural production – it's a viable demonstrator where farming efficiency coincides with regenerative techniques and knowledge sharing. In a country whose agricultural future will largely play out in Santa Cruz, this combination of production, proof-of-concept and dissemination gives the Hacienda a particularly important strategic role.



Hacienda Patiño serves as a platform for the agroecology transition, with outreach programmes for youth and farmers. During a recent event for students, one of them said:

*It's really encouraging to see so many other students actively engaged in protecting Bolivia's diverse natural resources.*

And during a workshop on sustainable livestock production, a farmer said:

*We need to update our methods so that we can produce more with fewer inputs and preserve our soil for years to come.*

This feedback shows that the transition is under way, as production is increasingly coupled with sustainability and knowledge transfer.



## FROM RESEARCH TO THE MARKET



### Research & innovation

- ✓ Soil enhancement
- ✓ Anaerobic digestors
- ✓ Probiotics for livestock
- ✓ Biodiversity studies
- ✓ Production conditions



### Farming practices

- ✓ Biochar
- ✓ Irrigation
- ✓ Rotational grazing
- ✓ Biofertilisers
- ✓ Genetic selection and local breeds



### Results & market presence

- ✓ **+45 %** increase in milk production
- ✓ **54,270** litres in 2025
- ✓ **10** points of sale
- ✓ Alliances for sustainable meat production

# Agroecology

## Hacienda Pairumani (Cochabamba): a model farm that supports sustainable production, research and regional development

Hacienda Pairumani, located in Cochabamba Valley, spans nearly **480 hectares** and is a national benchmark for sustainable agriculture, applied research and technology transfer. The farm implements an integrated agroecology model based on the simple idea of bringing soil, plants, animals and humans into a single, sustainable productive system. This model's sound underpinnings were confirmed in 2025 through a combination of efficient farming, knowledge sharing, strong regional ties and public outreach.

Milk production lies at the core of the Hacienda's activities. It produced over **1.067 million litres of raw milk** in 2025, exceeding its annual target, and used more than **1.001 million litres** of this milk to create dairy products. The breakdown of dairy products reflects the model's well-structured approach, with most of the raw milk being processed into pasteurised milk and yoghurt, followed by cheese and butter. The farm's best manufacturing practices (Buenas Prácticas de Manufactura) certification was renewed in 2025, confirming that the processing facility has achieved high quality standards.

Seed production is the second way in which Hacienda Pairumani makes an impact. In 2025, it produced over **72 tonnes of certified seeds** – corn, peas and broad beans – which were distributed to **1,342 farmers** with an estimated potential **6,710 beneficiaries**. These efforts aim to improve food security, encourage farmers to grow high-yield varieties and reinforce the Hacienda's role as a reference for

small- and medium-sized farmers. In addition, compost is generated at the site – nearly **1,500 tonnes** last year – as a further step towards self-sufficiency and improved soil fertility.

In 2025, Hacienda Pairumani confirmed its role as a research and technology platform. **It hosted six applied research projects, five workshops and eight classes**, which together attracted a total of **150 participants** to explore topics including soil fertility, animal and crop farming, seeds and biotechnology. The research conducted at the farm was disseminated through conference presentations and articles published in **ACTA NOVA**, demonstrating the model farm's ability to produce and share knowledge useful to the agroecology sector.

Hacienda Pairumani also stepped up its regional outreach programmes in 2025. The farm held **12 workshops** that drew in **251 farmers** from several communities, while its outreach activities, fairs and educational initiatives strengthened its bonds with the local community. Over **113,000 people** visited its ecotourism park in 2025, exceeding the target and further illustrating its role as a driving force in the region. Hacienda Pairumani is a rare centre where sustainable production goes hand in hand with environmental education and real-world experience.

Another key feature is the Hacienda's work to preserve the region's natural and genetic heritage. This is reflected in its management of genetic resources, access to those





## COMMUNITY DEVELOPMENT



251

farmers trained in eight  
local communities  
(regional entities)

## SEED DISTRIBUTION



251

farmers have adopted  
high-yield seeds

resources, efforts to protect threatened species and ex situ conservation activities – all of which underscore the farm's role as a functional preserve of agricultural biodiversity.

In 2025, Hacienda Pairumani stood out as an exceptional model farm that not only runs efficiently but also shows how production, research, education and environmental conservation can feed into each other, with the goal of promoting more sustainable farming practices and supporting tangible regional development. Hacienda Pairumani is helping shape the development of sustainable farming models in Bolivia, alongside the experimental work being done in Santa Cruz.

## SOCIAL IMPACT OF THE SEED PROGRAMME IN 2025



### HUMAN IMPACT

**6,710** beneficiaries

Direct support to rural families and communities through access to seeds and crop production.



### REGIONAL IMPACT

**7** departments  
**18** municipalities

Programme presence and implementation, both locally and nationally.



### PRODUCTION IMPACT

**1,547** hectares covered  
**69.3** tons sold

Expanded crop production and adoption of enhanced seeds.



# Culture

## Creating cultural experiences, nurturing talent and bringing heritage to life

In 2025, the Foundation took a major step forward in shaping an accessible, outward-looking cultural programme firmly rooted in its venues. Our goal is not simply to stage high-quality events, but to create experiences that connect heritage with contemporary creativity and attract a broad audience base. Throughout the year, our landmark venues – from the Palacio Portales and the Villa Albina in Cochabamba to the Teatro Doña Albina in La Paz – were central to that effort, hosting a consistent programme of concerts, immersive experiences, family events and artistic performances. Initiatives such as “Palacio Suená” and the Villa Albina evenings helped us strengthen audience engagement and build a more coherent identity across our programming.

In 2025, we welcomed over **45,000** visitors to our venues in Cochabamba, La Paz and Santa Cruz. We are bringing these heritage sites to life as fully fledged cultural destinations. By redesigning the visitor experience and expanding our outreach and audience support work, we are opening our spaces up to a broader and more diverse public.

Last year, we hosted more than **50 exhibitions** and **140 cultural events** at our theatres and Espacios Patiño venues across the country, creating opportunities for artists, technical teams and institutions to work together. Our programme also reached beyond Bolivia’s three main cities.

In Sucre, for instance, we further strengthened our role in bringing culture to audiences nationwide by partnering with the Casa de la Libertad, the location where Bolivian independence was proclaimed in 1825.

The celebrations surrounding the nation’s 200th anniversary gave our programme a new focus: a programme of talks, presentations, artistic events and environmentally focused projects connecting collective memory with contemporary creation, in order to explore how Bolivian cultural identity is shaped and continually reinvented. (At the Villa Albina, for example, we held a monthly event showcasing each of the country’s nine departments in turn.)

We once again took part in Zona Maco in Mexico, Latin America’s leading contemporary art fair, further strengthening our ties with the international art scene while providing exposure for Bolivian talent. We also hosted visiting international artists in Bolivia, creating opportunities for collaboration and bringing fresh perspectives into local artistic practice.

In a similar vein, the Teatro Doña Albina hosted “Aprende con Albina”, a series of hands-on workshops designed to equip young Bolivians with technical skills – in areas such as sound, lighting and production – that are often overlooked in conventional training programmes. By addressing that gap, the initiative is helping to nurture a new generation of skilled cultural practitioners.



## DIRECT BENEFICIARIES IN BOLIVIA



78

artists  
highlighted



12

cultural institution  
partners



124

students and  
guides trained

Also last year, the Foundation opened its venues more widely to outside initiatives: throughout 2025, our theatres and Espacios Patiño spaces played host to more than **120 events** through partnerships and venue hire arrangements, further cementing their role as cultural and creative hubs.

Every aspect of our programme is designed to encourage public engagement with culture. Through guided tours, workshops and participatory activities, audiences are invited not only to discover artistic and heritage content, but also to interact with it and make it their own. Last year therefore marked an important turning point in our approach: beyond curating cultural events, we are building a model that brings together venues, audiences and artistic creation, while helping raise the profile and strengthen the foundations of Bolivia's cultural sector.



# Education

## Helping young people learn, grow and build their future

In Bolivia, the challenge is not simply getting children into school, but ensuring that learning is meaningful, continuous and relevant to the world that young people are growing up in today. To address these issues, the Foundation is developing hands-on, experimental, locally rooted learning approaches designed to keep young people engaged, reduce school drop-out and give them the tools to shape a better future – both for themselves and for their country.

We put this approach into practice through targeted initiatives designed around local realities and needs.

One example is the Encuentros project in **Potosí** on the slopes of Cerro Rico, a mountain famed for its mining heritage. Here, in a community living in hardship, around **150 children** receive continuous educational, social and medical support through a locally tailored model that combines a learning and community centre and a mobile unit.

In **Coroico**, meanwhile, our backing for the **Cochuna** boarding school addresses a different but related challenge: providing a stable environment for children from isolated rural communities. Our support has delivered measurable progress, particularly in reading and mathematics, demonstrating how strongly learning outcomes depend on structure and continuity.

The “Con-Ciencia Verde” programme reflects another of the Foundation’s priorities: equipping young people to become active contributors within their region. Around **40 people** were selected to take part in a programme combining mentoring, training and immersive experiences. Participants develop leadership and critical-thinking skills and a stronger sense of civic engagement around the environmental challenges facing Bolivia today.

A second pillar of the Foundation’s approach focuses on creating spaces where education can continue beyond the classroom. In Cochabamba, for instance, our **six libraries** function as active community learning hubs, hosting regular activities focused on reading, science and personal development. In 2025, more than **5,700 children and young people** used these facilities, strengthening both foundational skills and their engagement with learning.

Meanwhile, our open educational spaces in La Paz, Cochabamba and Santa Cruz run year-round workshops – including during school holidays – that help young people to build skills in robotics, coding and problem-solving through experimentation and hands-on learning. This approach reflects a broader shift in educational practice, which sees learners given the freedom to test ideas, work together and learn by doing.





**TRAINING IN  
19 SCHOOLS**  
ACADEMY PROGRAMME



**43**

teachers



**+1,000**

students

The Foundation is also taking on a growing role as a bridge between components of the education system, with events such as the ConectaEdu congress and the STEM+ Olympiads providing spaces for teachers, students and institutions to share ideas, build skills and trial new approaches.

Our educational work thus follows a structured approach that combines community-based initiatives, learning spaces and collaboration across the sector, allowing us to generate a lasting impact by supporting not only young people themselves, but also the educational ecosystems that underpin their learning.

Stories like José Manuel's show the lasting impact that long-term support can have. A former participant at the Foundation's Villa Rivero library, he is now training to become a teacher himself – a career path he directly attributes to the support he received there:

*I struggled academically when I was younger, but the library helped me progress year after year. It was also where I discovered my interest in science and reading.*

*He continues to learn today: I'm proud of the path I've taken and grateful to the people who helped me along the way.*



## THE LIBRARY NETWORK IN COCHABAMBA



# Paediatric health

Treating children, preventing disease and building long-term capacity

In Bolivia, major inequalities continue to affect children's health, from limited access to specialised care to weak prevention systems and ongoing vulnerability to malnutrition. In response, the Foundation has developed a paediatric health model centred on the child as a whole and focused on building a more coherent and sustainable health response structured not only around treatment, but also around prevention and training.

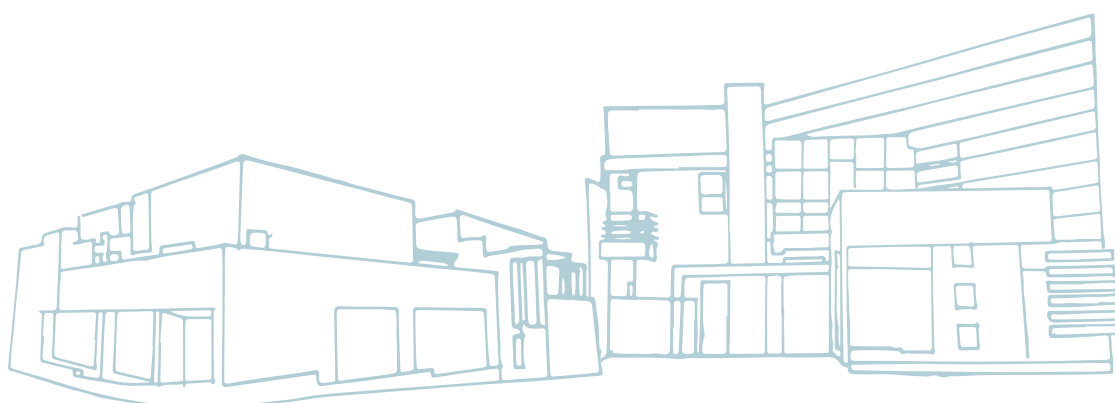
At the heart of this model is the Albina R. de Patiño Paediatric Centre in Cochabamba, which provides strong front-line paediatric care capacity and has become a key provider in the region. In 2025, the centre handled more than **74,000 consultations**, including **23,000 emergency visits**, alongside nearly **1,800 hospital admissions**. It also conducted more than **600 surgical procedures** – **twice the number carried out in 2024** – reflecting both the centre's growing capacity and its role in addressing long-unmet paediatric health needs.

The Foundation's work is not limited to clinical care: it also focuses on the broader factors that determine children's health outcomes. Vaccination is a cornerstone of this

approach. Despite national shortages and supply pressures, we administered more than **21,000 vaccine doses in 2025**. We also work with families to encourage behaviours that reduce health risks from an early age.

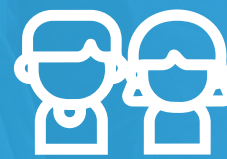
The Foundation's response to malnutrition follows the same model. Our Child Nutrition Centre in El Alto provides specialised nutritional and medical care to the most vulnerable children in society. In 2025, the centre carried out more than **3,500 consultations** and treated nearly **170 hospitalised children**. Beyond merely treating malnutrition, staff also work with families to build healthier and more sustainable eating habits, thus helping to prevent the cycle from repeating itself across generations.

The Foundation's work focuses additionally on strengthening the healthcare system over the long term. One way we do this is by training the next generation of clinical professionals, with **14 resident doctors** joining the paediatric specialisation programme in 2025, while our applied research activities help teams refine clinical protocols and improve standards of care in response to local needs and conditions.



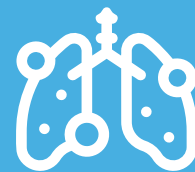


## TREATMENT AND PREVENTION



74,000

children treated through  
outpatient consultations



1,400

children treated for pneumonia  
and rotavirus infections



21,000

vaccine doses  
administered

The Foundation also expanded its outreach efforts last year through targeted campaigns in surgery, eye care, ENT services and adolescent health, supporting **more than 600 additional beneficiaries** – many outside conventional settings – and bringing specialised care to hard-to-reach communities.

This holistic model, which combines treatment, prevention, nutrition and training, is helping strengthen both the quality and continuity of paediatric care while delivering a response that better reflects the realities faced by children and families across Bolivia.

“

At the Child Nutrition Centre in El Alto, special workshops give families an opportunity to talk through the practical aspects of infant nutrition. One mother described her experience of the workshop in these terms:

*We were made to feel extremely welcome. The staff genuinely care about making sure we're informed and able to make good decisions about what we feed our children.*

*I would encourage all mothers – including those from other neighbourhoods – to come here and learn more.*



A father attending the session stressed the importance of both parents being involved:

*Fathers need to step up as well. Mothers cannot shoulder the burden of responsibility alone.*

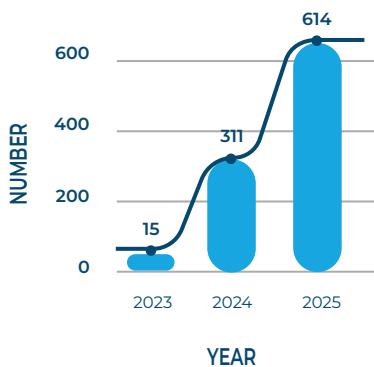
He also noted the crucial role of nutrition in the early years of life

*Good nutrition is essential. It's probably the most important investment we can make in our children's future.*

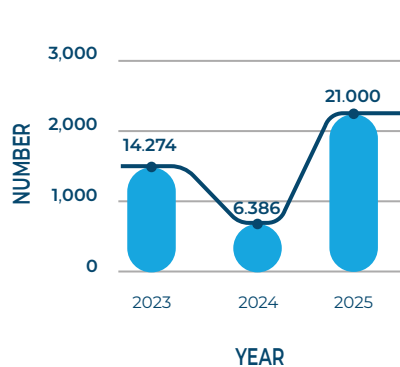
”

## KEY PAEDIATRIC HEALTH INDICATORS (2023–2025)

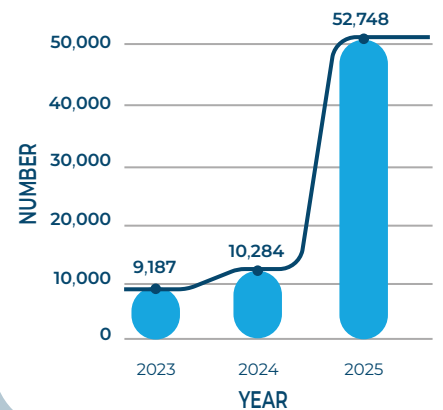
### Surgical procedures



### Vaccine doses



### Lab analyses



# Activities in Switzerland

## Training talent, building connections and creating opportunities

The Foundation's work is not limited to Bolivia. From our Geneva headquarters, we develop programmes at the intersection of education, culture and international exchange.

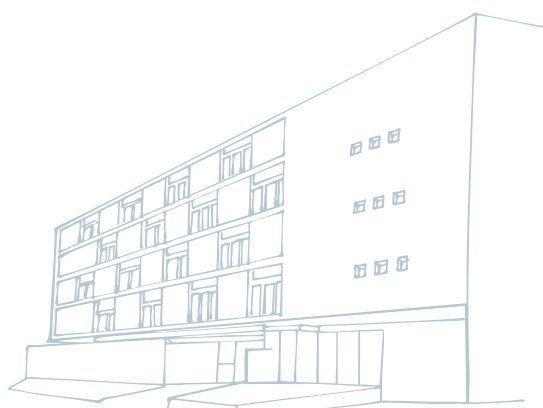
Our Swiss presence is far from a secondary outpost: it is where young people build skills, gain exposure to rigorous standards and acquire the knowledge and experience they need to contribute to Bolivia's future development. Geneva is also where the Foundation's strategic priorities are set and its programmes and activities are coordinated. Through its work, the Foundation creates opportunities for people, ideas and experience to move between the worlds of academia, culture and public life.

In March 2025, **21 young musicians** took part in a series of workshops and master classes led by internationally acclaimed teachers. The sessions were held in Rolle as part of the **International Music Encounters**, organised in partnership with the **International Menuhin Music Academy**. Our support for artistic training does not stop in the classroom: we also provide opportunities for talented performers to take to the stage. That approach was reflected in the 41st **Patiño Foundation Concert** at Victoria Hall, Geneva, where an audience of **1,450 people** watched former students turned soloists perform alongside established artists including soprano Serena Farnocchia. The concert was free and open to the public, underscoring our long-standing commitment to making high-level artistic performance accessible to a wide audience.

The Foundation also supports emerging contemporary artists. In 2025, we awarded **four artistic scholarships** as part of our partnership with the City of Geneva. Under this joint programme, the local authority selects and funds the artists, while the Foundation provides accommodation and studio space at the Cité Internationale des Arts in Paris, allowing participants to build connections with leading figures and institutions on the European art scene.

The Foundation maintains a long-standing commitment to higher education through its **academic scholarship programme**, which has supported Bolivian students since 1931. In 2025, the initiative – which is designed for talented young people pursuing high-level academic pathways – supported **44 scholars** worldwide, all of whom were studying technical disciplines closely aligned with local workforce needs: **17 in Europe** (in Switzerland and Belgium), **five in Honduras**, **one in Mexico** and **21 in Bolivia**. The support we provide extends beyond financial assistance: students receive guidance throughout their studies, including with admissions, academic affairs and day-to-day living. In exchange, scholars are expected to return to Bolivia and put what they've learned to work there.

The Foundation also supports scholars in practical ways to help them succeed. In Geneva, we have two university residence halls that can accommodate up to **85 students**. As well as giving scholars a place to live, these facilities help them settle into academic life, meet peers from other countries and form relationships that will last beyond their studies.





## ACADEMIC SCHOLARSHIP PROGRAMME



44  
scholars



500  
alumni



21  
young musicians

This long-term thinking is also reflected in the Alumni Network, a vibrant, active community of **500 former scholars** who regularly collaborate and share knowledge with one another. In 2025, 74 alumni met in Cochabamba, underscoring the network's role in supporting graduates as they reconnect with Bolivia after their studies. The conversations, particularly around education, showed that these experiences do not end with individual success stories: former

Taken together, these initiatives go beyond helping individuals study overseas. Rather, they ensure that scholars take the knowledge and experience they gain through the programme and put it to work for the future of their country.

## 2025 SCHOLARS





## **Simón I. Patiño Foundation**

Rue Giovanni-Gambini 8  
1206 Geneva – Switzerland  
Tel. : +41 22 347 02 11

[info@patino.org](mailto:info@patino.org)

[www.patino.org](http://www.patino.org)

### **At 31 December 2025:**

#### **Foundation Board**

Benoît Merkt, Chair\*  
Nicolas du Chastel, Vice-Chair\*  
Elisabeth de Watteville, Secretary\*  
Mikael de Rham  
Jacques de Vaucleroy  
Federico Foglia  
Etienne Gounod  
Felipe Ortiz-Patiño  
Oliver Ortiz

\*Members of the Executive Committee

#### **General Director**

Nicolas Joray

